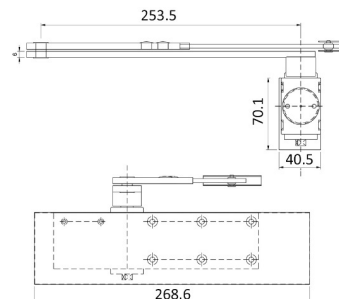


### Description

KCC Overhead Door Closer



### Technical Features

EN Power Size	2 to 4	Hold Open	Optional by Arm (not suitable for Fire Doors)
Width of Door (mm)	850 - 1100	Non-handed	Yes
Door Width Test Weight (Kg) - see EN1154	40 - 80	Cover	Yes
Arm Type	Standard 'V'	Application	Fig 1, Fig 61 & Fig 66
Closing Mechanism	Rack & Pinion	<b>Dimensions</b>	
Power Shoe Arm Bracket	Yes	Body Length (mm)	268.60
Angle of Opening	180 Degrees	Body Height (mm)	70.10
Power Adjustable by	Position on Door	Body Projection / Width (mm)	40.50
Adjustable Speed. Sweep/Latch	Yes / Yes	<b>Finishes</b>	
Backcheck	No	Finish without Cover	n/a
Delayed Action Adjustable	No	Finish with Cover	SSS, PSS, PB, RAL Colour

### Certification

European Norm	hEN1154
Product Classification	<div> <div>4</div> <div>8</div> <div>4</div> <div>1</div> <div>1</div> <div>3</div> </div> <div>2</div>
EC Certificate of Conformity No.	2812-CPR-AD0108
Certifire No.	CF5263
Declaration of Performance	DOP001A
Other Test Evidence	n/a

### BIM Assist™

### CE

### Certifire

### BC(A)R Assist™\*

### Guarantee

**10 Years**

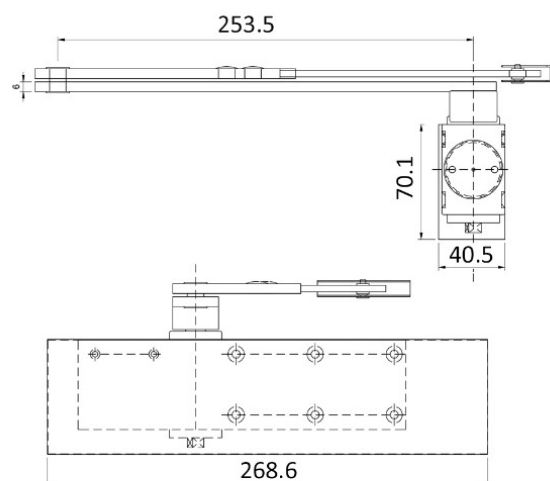
Last Reviewed

10/04/2025

\* ROI Only

## Description

KCC Overhead Door Closer



## Specification Text

### 410 OVERHEAD DOOR CLOSERS

- Standard: To BS EN 1154.
- Door closing devices to fire/ smoke control doors: CE marked.
- Manufacturer: KCC Group
- Product reference: KD-9130
- Type: Rack & Pinion Overhead Door Closer c/w Cover
- Power size: 2 to 4
- Other functions: n/a
- Casing finish: [SPECIFY FINISH]
- Operational adjustment:
  - Variable power: Matched to size, weight and location of doors.
  - Latched doors: Override latches and/ or door seals when fitted.
  - Unlatched doors: Hold shut under normal working conditions.
- Closing against smoke seals of fire doors: Positive. No gaps.

### 412 PERFORMANCE SPECIFICATION FOR OVERHEAD DOOR CLOSERS

- Standard: To BS EN 1154.
- Door closing devices to fire/ smoke control doors: CE marked.
- Minimum classification grades:
  - Category of use: 4.
  - Durability: 8
- Door closer power size: 2/4
- Suitability for use on fire/ smoke doors: 1
- Safety: 1
- Corrosion resistance: 3
- Type: Rack & Pinion Overhead Door Closer c/w Cover
- Other functions: n/a
- Casing finish: [SPECIFY FINISH]
- Operational adjustment:
  - Variable power: Matched to the sizes and weights of doors.
  - Latched doors: Override latches and/ or door seals when fitted.
  - Unlatched doors: Hold shut under normal working conditions.
- Closing against smoke seals of fire doors: Positive. No gaps.