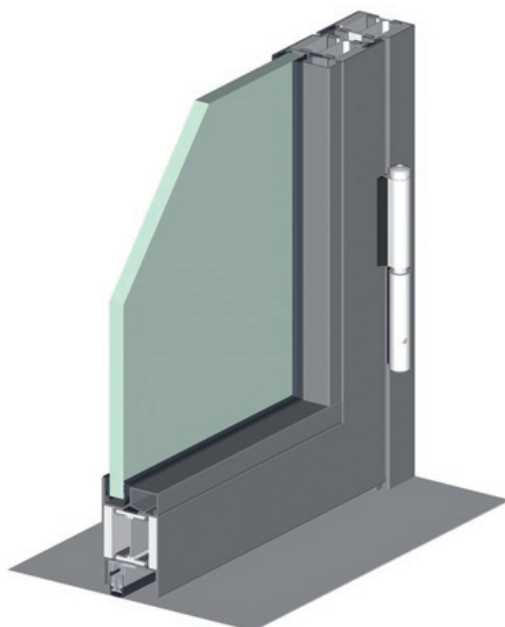


Description

KCC Schuco Jansen Janisol 2 Burglar Resistant Fire Protection Doors and Fire Glazed Fixed Lights



Product Summary

Burglar-resistant fire protection doors made of thermally insulated Janisol 2 profiles, single or double leaf, in steel or stainless steel, with shadow joints on all sides, double rebate gasket and fixed glazing

Certification

European Norm	n/a (No Harmonised European Norm)
Product Classification	No Harmonised European Norm
EC Certificate of Conformity No.	n/a (No Harmonised European Norm)
Certifire No.	n/a
Declaration of Performance	n/a (No Harmonised European Norm)
Other Test Evidence	See advanced features

BIM Assist™

BC(A)R Assist™*

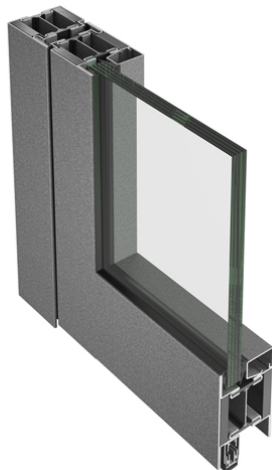
Last Reviewed

16/08/2021

* ROI Only

Description

KCC Schuco Jansen Janisol 2 Burglar Resistant Fire Protection Doors and Fire Glazed Fixed Lights



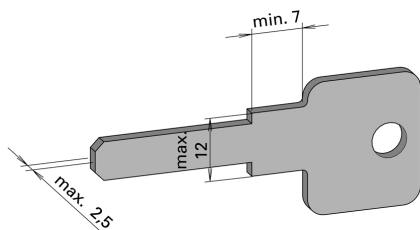
Features

- Burglar-resistant fire protection doors made of thermally insulated Janisol 2 profiles, single or double leaf, in steel or stainless steel
- Flush-fitting door construction with all-round glazing rebate and dual rebate seal are approved for use in doors opening inwards or outwards
- Shadow joints on all sides, double rebate gasket and fixed glazing
- Doors are fitted with a triple-bolt multi-point lock with stainless steel face plate. Operable by cylinder lock
- Approved for use with electric strikes as necessary
- Doors tested to EN1627 and classified in resistance class RC1, RC2, RC3 (WK1, WK2, WK3)
- The same design with the corresponding infill panels also fulfils resistance classes RC1, RC2 (WK1, WK2)

Technical Characteristics



- Section height of 60mm for door frames and leaves
- Profiles of 25 mm and 50 mm wide can be used for mullions and transoms
- Uncoated or strip-galvanised steel, suitable for powder coating or stove-enamelling
- Stainless steel grade 304, uncoated or polished
- Door contact side can be the hinge side or the non-hinge side
- Approved for use with concealed closers dormaKaba ITS96 or Geze Boxer
- Suitable for use with Euro profile cylinders
- Approved & tested EN1627 components:
 - Multipoint lock 555.330-332 and 597.041
 - Strike plate 555.334 (for main lock) or fire-resistant electric strike 555.477/478
 - Strike plate set 555.335 (for ancillary locks)
 - Cylinder protection 555.338 and 555.343 (or alternative, comparable protection)
 - Rebate securing blocks 555.339
 - Rebate lever bolt with handle lock 555.380 and reinforcement set 555.342 (for double-leaf doors)
 - Bottom additional set for secondary leaf
 - Weld-on hinges 550.229, 550.238, 550.276, 555.260, 555.261, 555.226, 555.227, 555.267, 555.268
 - Steel screw-on hinges 555.570-573 and 555.536-539
 - Steel screw-on hinge 550.250 (only when the contact side is opposite the hinges)
 - Stainless steel screw-on hinge 550.286 (only when the contact side is opposite the hinges)
 - Welded hinge with rivets 550.399 and door handle 550.398 (only when the contact side is opposite the hinges)



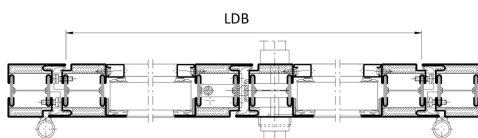
Cylinder Selection

- RC1 , RC2, RC3 (WK1, WK2, WK3): Select cylinder lock models that have been tested to EN 1303:2005-04 (key related security: minimum class 4 (digit 7) and attack resistance: minimum class 1 (digit 8).
- Euro Profile cylinder \varnothing 17 mm: 70 mm
- When fitting cylinders in Jansen cylinder protection, the keys of the cylinders must match the diagram shown

EN1627 Pedestrian doorsets, windows, curtain walling, grilles and shutters. Burglar resistance



- Testing classes
 - Resistance Class 1 (RC1), can only withstand physical force
 - Resistance Class 2 (RC2), physical force using a few (small) tools
 - Resistance Class 3 (RC3), physical force using tools such as a crowbar
- Resistance class of door - glass requirement
 - EN1627 RC1/WK1: P3A Fire resistant glass (EI30 to EN356)
 - EN1627 RC2/WK2: P4A Fire resistant glass (EI30 to EN356)
 - EN1627 RC3/WK3: P6B Fire resistant glass (EI30 to EN356)
- Infill panels:
 - Fire-resistant glass EI30 or veneered panels made of plaster-board covered with steel sheet of 2mm thickness



Maximum permissible dimensions (clearance height and width LDB/LDH)

- Single leaf: LDB 1370 x LBH 2500mm
- Double leaf: LDB 2640 x LBH 2500mm
- Height max. 5000 mm

Description

KCC Schuco Jansen Janisol 2 Burglar Resistant Fire Protection Doors and Fire Glazed Fixed Lights

