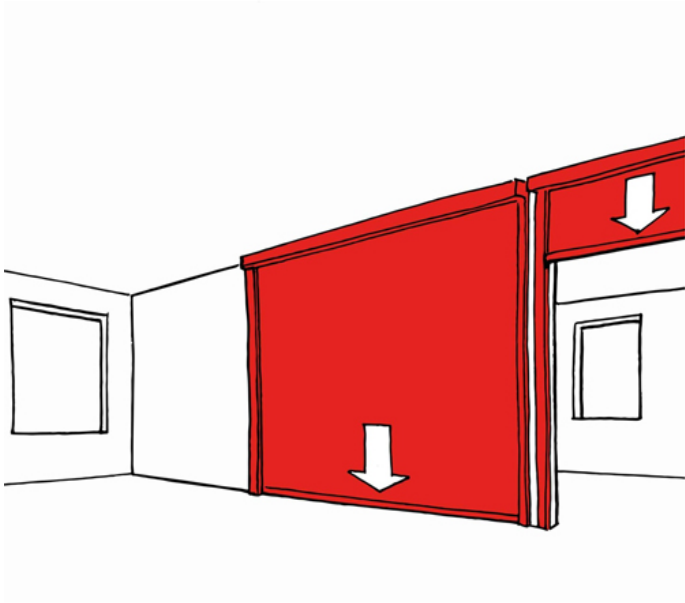


Description

Stoebich Fibershield® Fire Curtain for Vertical Protection



Product Summary

Fire curtain that when activated, provides vertical protection against fire

| Certification | | | BIM Assist™ | |
|----------------------------------|-----------------------------------|--|-----------------|------------|
| European Norm | EN 12101-1 | | CE | |
| Product Classification | Conforms | | BC(A)R Assist™* | |
| EC Certificate of Conformity No. | n/a (No Harmonised European Norm) | | Guarantee | |
| Certifire No. | n/a | | 1 Year | |
| Declaration of Performance | n/a (No Harmonised European Norm) | | Last Reviewed | 24/07/2020 |
| Other Test Evidence | n/a | | * ROI Only | |

Description

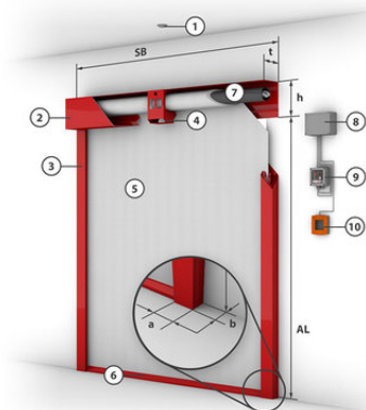
Stoebich Fibershield® Fire Curtain for Vertical Protection



Features & Characteristics

- Fire curtain that when activated, provides vertical protection against fire
- Standard sizes and common components delivers a highly competitive system
- Closes without external energy
- Tested to 10,000 cycles
- Closing action of top to bottom
- Fire Resistance: E30, E60, E90, EW30, EW60

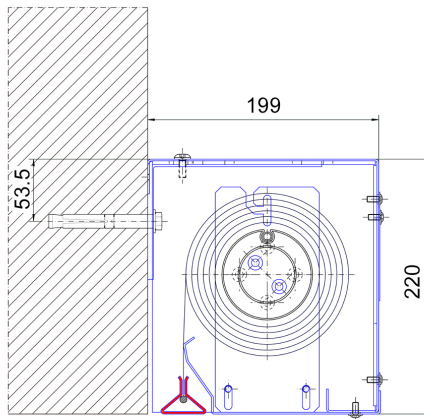
System Components & Dimensions



- ① Smoke detector
- ② Casing
- ③ Side guide
- ④ Fixing Bracket
- ⑤ Fabric
- ⑥ Closing element
- ⑦ Tubular motor
- ⑧ Control module
- ⑨ Control unit
- ⑩ Manual release

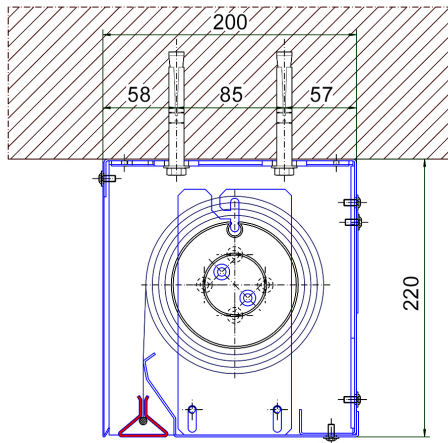
Dimensions

- Fabric: Ecotex 1100
 - System width (SB): $\geq 1.1\text{m}$, $\leq 3.0\text{m}$
 - Unrolled length (AL): $\leq 3.0\text{m}$
 - Casing depth (t): 200mm
 - Casing height (h): 220mm
 - Special sizes on request up to width of 6.0m
- Fabric: Heliotex EW
 - System width (SB): $\geq 1.1\text{m}$, $\leq 3.0\text{m}$
 - Unrolled length (AL): $\leq 3.0\text{m}$
 - Casing depth (t): 200mm
 - Casing height (h): 220mm
 - Special sizes on request up to width of 7.0m



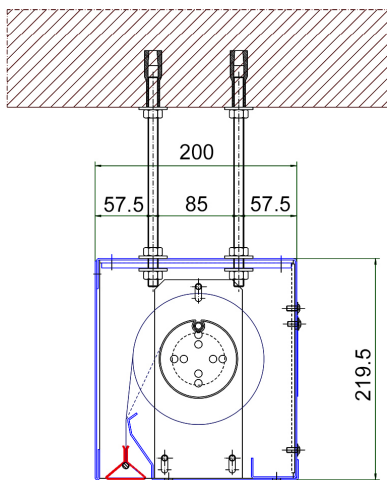
Headbox - Installation to the Wall

- The bottom bar is shown in RED
- The drawing for illustration purposes only, Stoebich will provide final installation drawings



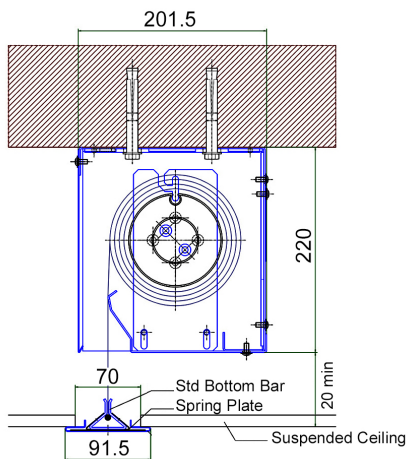
Headbox - Installation to the Ceiling

- The bottom bar is shown in RED
- The drawing for illustration purposes only, Stoebich will provide final installation drawings



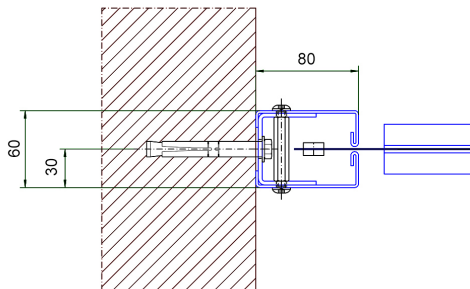
Headbox - Alternative Installation to the Ceiling

- The bottom bar is shown in RED
- The drawing for illustration purposes only, Stoebich will provide final installation drawings



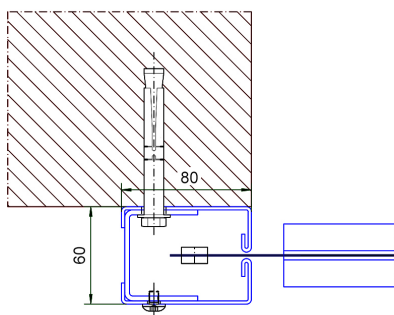
Headbox - Suspended Ceiling Arrangement c/w Self Levelling Bottom Bar

- The self levelling bottom bar is shown in BLUE
- The drawing for illustration purposes only, Stoebich will provide final installation drawings



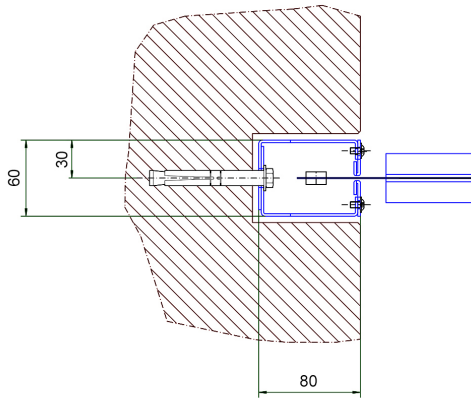
Side Guide - Installation in the Embrasure

- The drawing for illustration purposes only, Stoebich will provide final installation drawings



Side Guide - Installation to the Wall

- The drawing for illustration purposes only, Stoebich will provide final installation drawings



Side Guide - Installation in a Recessed Pocket

- The drawing for illustration purposes only, Stoebich will provide final installation drawings

Description

Stoebich Fibershield® Fire Curtain for Vertical Protection

**Specification Text****FIRE AND SMOKE CURTAIN SPECIFICATION**

- Manufacturer: Stoebich
- Product reference: KFSC-FS CURTAIN E
- Type: Stoebich Fibershield® Fire Curtain for Vertical Protection
- Fire Resistance: E30, E60, E90, EW30, EW60
- Fire load free zone:
 - Ecotex EI 30/60/90 minutes - 100/150/200 cm
 - Heliotex EI 30/60/90 minutes - 20/30/50 cm
- Fabric: Ecotex 1100
 - System width (SB): $\geq 1.1\text{m}$, $\leq 3.0\text{m}$
 - Unrolled length (AL): $\leq 3.0\text{m}$
 - Casing depth (t): 200mm
 - Casing height (h): 220mm
 - Special sizes on request up to width of 6.0m
- Fabric: Heliotex EW
 - System width (SB): $\geq 1.1\text{m}$, $\leq 3.0\text{m}$
 - Unrolled length (AL): $\leq 3.0\text{m}$
 - Casing depth (t): 200mm
 - Casing height (h): 220mm
 - Special sizes on request up to width of 7.0m

