

Description

KCC Arriva Concealed Frame Doorsets for Outward Opening Doors - Non Fire Rated



Product Summary

Arriva is a concealed frame outward opening non fire rated doorset, designed to create and enhance contemporary interiors

Certification		BIM Assist™	
European Norm	No Harmonised European Norm	BC(A)R Assist™*	
Product Classification	n/a (No Harmonised European Norm)		
EC Certificate of Conformity No.	n/a (No Harmonised European Norm)		
Certifire No.	n/a	Guarantee	
Declaration of Performance	n/a (No Harmonised European Norm)	Last Reviewed	1 Year
Other Test Evidence	n/a	* ROI Only	06/01/2020

### Description

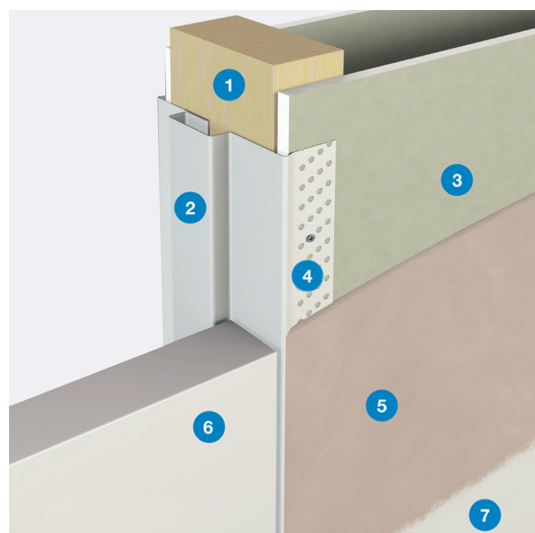
KCC Arriva Concealed Frame Doorsets for Outward Opening Doors - Non Fire Rated



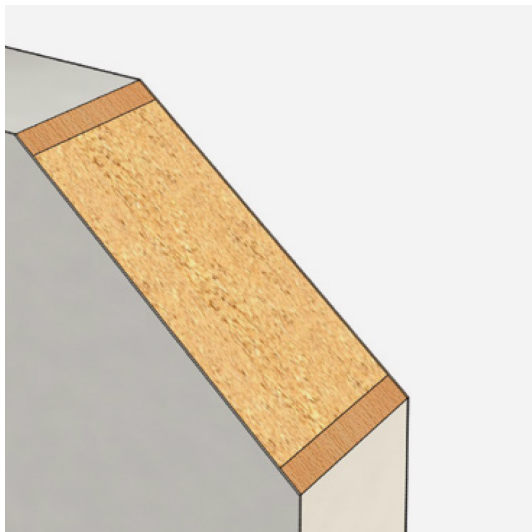
### Features

- Concealed frame doorsets for outward opening doors c/w metal frame and timber door leaf
- Commonly used in residential and other high-end projects where aesthetics and versatility are key
- Fully concealed frame enables you to create a sleek, contemporary finish
- Flexible wall depth
- Provided as a full doorset with the door leaf prepared to take hinges
- Manufactured to suit each project
- Visible or concealed hinges
- Optional Fire tested versions to FD30 and FD60
- Acoustically tested
- Standard locks and latches can be used

### Construction



- Arriva is an extremely versatile doorset with an outward-opening action. When facing the concealed flush side of the door, it opens towards you
- The Arriva frame is a split-type jamb that clips together around the finished wall construction (such as stud and plasterboard). Reinforced, rolled-edge side flanges are perforated for easy fixing
- The wall and jamb are then plastered or jointed over with the rest of the wall to give a continuous surface right up to the door. After an initial coat of metal primer, the jamb can be painted with oil-based paint or emulsion to match the walls. Alternatively, the frame can be supplied powder-coated
- The doors can be fitted either with our own surface-mounted butt hinges, or with mortised concealed hinges
- Fitting the Arriva system is much easier than using a shadow-gap system or building bespoke joinery with lift-off panels - and also delivers far superior results
- ① = Stud Walls
- ② = Door Jamb
- ③ = Plasterboard
- ④ = Fixing Area
- ⑤ = Jointing Compound / Skim
- ⑥ = Door
- ⑦ = Finished Painted Wall



#### Door Leafs

- Manufactured from high-density solid timber core using the latest CNC technology
- Arriva doors are made to suit every individual order, taking into account size, quantity and finish. The doors are cut out of their original core size and then calibrated for a smooth surface to take the next stage of preparation. They are then lipped with hardwood and veneered with an opaque kraft paper to conceal the lippings and give a completely smooth finish ready for final painting
- Using our technologically advanced CNC machinery, the doors are then cut out for hinges, seals and other ironmongery where required before being palletised and sent to site in their 'ready to fit' form
- Specification
  - Particle – 29kg/sqm
  - Solid Timber – 18kg/sqm
  - Max width 926mm
  - Max height 3000mm

#### Finishes



- The metal frame and timber door leaf can be provided in a variety of different finishes
- Frames
  - Cold-rolled from high-performance steel
  - Unfinished for site painting : The frame is pre-etched and simply requires a metal primer to be applied to the frame before painting
  - Powder-coated: The frame can be prefinished in a polyester powder-coated finish to a standard RAL colour
- Door Leaf
  - Timber
  - Primed: Provided pre-primed for painting on site
  - Pre-finished paint: The door leafs can be provided pre-painted to a standard RAL colour
  - Veneered: The door leafs can be veneered in any species of timber veneer and then lacquered in a 30% clear sheen
  - Laminate: Laminate coating for a more robust finish



#### Hinge Options

- Butt Hinges (Left)
  - Surface Mounted c/w Self Drilling Screws
  - Stainless Steel Finish
  - Non Fire Rated
  - 44mm or 54mm Doors
- ROC York Adjustable Hinge (Right)
  - Adjustment on 3 axes combining the ultimate finish with ease of installation and versatility
  - Satin Chrome Finish
  - Non Fire Rated
  - 44mm Doors
  - Doors up to 60kg - RY45, doors up to 100kg - RY80

**Skirting**

- Surface-mounted skirting (left): A standard surface mounted skirting can be applied in the usual fashion. The skirting needs to finish at the edge of the frame
- Flush skirting (right): A flush skirting can also be used. This will need to be specified to ensure the frames are prepared to suit this detail

**Ironmongery**

- Optional Lock and latch preparation
  - The frame is prepared to receive the lock or latch that will be used in the door. Almost all standard lock and latch types are compatible with the frame. The strike plate is included with the doorset, the actual lock or latch is not. The lock/latch is fitted to the door on site
  - The strike plate is provided in stainless steel as standard. If another finish is required please ensure this is clearly specified
  - The strike plate is surface-mounted onto the frame
- Optional Door Closer
  - Compatible with overhead or concealed closers
- Optional Flush bolts
  - These can be used in the normal fashion. The hole in the frame is drilled out on site. The flush bolts are fitted on site

**Acoustic Options**

- Tested by BM TRADA
- Select 29 or 32db

## Description

KCC Arriva Concealed Frame Doorsets for Outward Opening Doors - Non Fire Rated



## Specification Text

### GENERAL HARDWARE

- Manufacturer: KCC Group
- Product reference: KDO-SEL/ARRIVA/NFR
- Type: Arriva Concealed Frame Doorsets for Outward Opening Doors - Non Fire Rated
- Door Leafs:
  - Particle – 29kg/sqm
  - Solid Timber – 18kg/sqm
  - Max width 926mm [SPECIFY]
  - Max height 3000mm [SPECIFY]
- Frames:
  - Cold-rolled from high-performance steel
  - Finish [SPECIFY] Unfinished for site painting: The frame is pre-etched and simply requires a metal primer to be applied to the frame before painting OR Powder-coated: The frame can be prefinished in a polyester powder-coated finish to a standard RAL colour
- Door Leaf:
  - Timber
    - Finish [SPECIFY] Primed: Provided pre-primed for painting on site OR Pre-finished paint: The door leafs can be provided pre-painted to a standard RAL colour OR Veneered: The door leaves can be veneered in any species of timber veneer and then lacquered in a 30% clear sheen OR Laminate: Laminate coating for a more robust finish
  - Hinges:
    - [SPECIFY] Butt Hinges: Surface Mounted c/w Self Drilling Screws, Stainless Steel Finish, Non Fire Rated, 44mm or 54mm Doors OR ROC York Adjustable Hinge: Adjustment on 3 axes combining the ultimate finish with ease of installation and versatility, Satin Chrome Finish, Non Fire Rated, 44mm Doors, Doors up to 60kg - RY45, doors up to 100kg - RY80
  - Skirting:
    - [SPECIFY] Surface mounted skirting OR flush skirting
  - Ironmongery:
    - [SPECIFY] Lock & latch Preparation, Door Closer and Flush Bolt preparation.
  - Acoustic:
    - [SPECIFY] 29db OR 32 db