

Description

KCC Arriva Concealed Frame Doorsets for Outward Opening Doors - Fire Rated FD30



Product Summary

Arriva is a concealed frame outward opening fire rated doorset, designed to create and enhance contemporary interiors

Certification

European Norm	No Harmonised European Norm
Product Classification	n/a (No Harmonised European Norm)
EC Certificate of Conformity No.	n/a (No Harmonised European Norm)
Certifire No.	n/a
Declaration of Performance	n/a (No Harmonised European Norm)
Other Test Evidence	30 Minute Fire Report 405452 - See restrictions imposed

BIM Assist™

BC(A)R Assist™*

Guarantee

Last Reviewed

* ROI Only

1 Year

06/01/2020

For the purpose of continual product development, KCC reserves the right to change specifications without notice. Please accept all dimensions as approximate. E&OE. © KCC Group 2025.

www.thekccgroup.com

Description

KCC Arriva Concealed Frame Doorsets for Outward Opening Doors - Fire Rated FD30

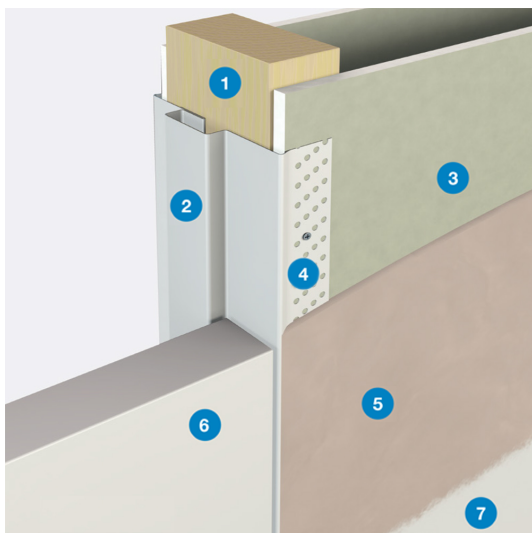


Features

- Concealed frame doorsets for outward opening doors c/w metal frame and timber door leaf
- Commonly used in residential and other high-end projects where aesthetics and versatility are key
- Fully concealed frame enables you to create a sleek, contemporary finish
- Flexible wall depth
- Provided as a full doorset with the door leaf prepared to take hinges
- Manufactured to suit each project
- Visible or concealed hinges
- Optional fire tested version to FD60
- Optional non fire rated version
- Acoustically tested
- Fire approved hardware only (see fire report for specific details)

Construction (General) - See also FD30 below

- Arriva is an extremely versatile doorset with an outward-opening action. When facing the concealed flush side of the door, it opens towards you
- The Arriva frame is a split-type jamb that clips together around the finished wall construction (such as stud and plasterboard). Reinforced, rolled-edge side flanges are perforated for easy fixing
- The wall and jamb are then plastered or jointed over with the rest of the wall to give a continuous surface right up to the door. After an initial coat of metal primer, the jamb can be painted with oil-based paint or emulsion to match the walls. Alternatively, the frame can be supplied powder-coated
- The doors can be fitted either with our own surface-mounted butt hinges, or with mortised concealed hinges
- Fitting the Arriva system is much easier than using a shadow-gap system or building bespoke joinery with lift-off panels - and also delivers far superior results
- ① = Stud Walls
- ② = Door Jamb
- ③ = Plasterboard
- ④ = Fixing Area
- ⑤ = Jointing Compound / Skim
- ⑥ = Door
- ⑦ = Finished Painted Wall



Finishes



- The metal frame and timber door leaf can be provided in a variety of different finishes
- Frames
 - Cold-rolled from high-performance steel
 - Unfinished for site painting : The frame is pre-etched and simply requires a metal primer to be applied to the frame before painting
 - Powder-coated: The frame can be prefinished in a polyester powder-coated finish to a standard RAL colour
- Door Leaf
 - Timber
 - Primed: Provided pre-primed for painting on site
 - Pre-finished paint: The door leafs can be provided pre-painted to a standard RAL colour
 - Veneered: The door leafs can be veneered in any species of timber veneer and then lacquered in a 30% clear sheen
 - Laminate: Laminate coating for a more robust finish



FD30 Fire Testing*

- The Arriva doorset has been fully fire tested to 30 minutes in single and double configurations.
- Important note: To ensure the fire integrity is not compromised it is important that the wall partition is suitable and also the interface between the partition and doorset is correct.
- Arriva are able to provide advice on your partition and interface details to ensure the fire regulations are met properly in conjunction with Arriva doors

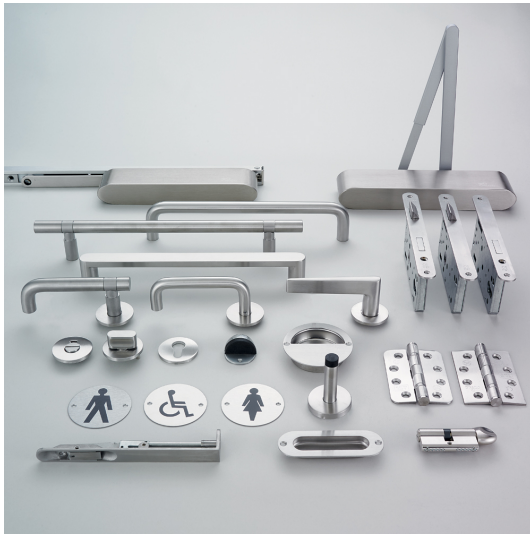
* Please see 30 Minute Fire Report 405452 and conditions imposed

Hinge Options

- Butt Hinges (Left)
 - Surface Mounted c/w Self Drilling Screws
 - Stainless Steel Finish
 - Suitable for FD30 Doors*
 - 44mm or 54mm Doors
- ROC York Adjustable Hinge (Right)
 - Adjustment on 3 axes combining the ultimate finish with ease of installation and versatility
 - Satin Chrome Finish
 - Suitable for FD30 Doors*
 - 44mm Doors
 - Doors up to 60kg - RY45, doors up to 100kg - RY80

* Please see 30 Minute Fire Report 405452 and conditions imposed





Approved Hardware*

- The fire test / assesment allows, yet provides limitations in the following categories:
 - Hinges
 - Closers
 - Latches / Locks
 - Panic Hardware
 - Security Bolts
 - Security Viewers
 - Door Furniture, Pull Handles, Flush Pulls
 - Flush Bolts
 - Automatic Closing Devices
 - Intumescent & Smoke Protection
 - Enviromental & Threshold Seals
 - Letter Boxes / Plates

* Please see 30 Minute Fire Report 405452 and conditions imposed



Skirting

- Surface-mounted skirting (left): A standard surface mounted skirting can be applied in the usual fashion. The skirting needs to finish at the edge of the frame
- Flush skirting (right): A flush skirting can also be used. This will need to be specified to ensure the frames are prepared to suit this detail



Acoustic Options

- Tested by BM TRADA
- Select 29 or 32db

Description

KCC Arriva Concealed Frame Doorsets for Outward Opening Doors - Fire Rated FD30



Specification Text

GENERAL HARDWARE

- Manufacturer: KCC Group
- Product reference: KDO-S/ARRIVA/FD30
- Type: Arriva Concealed Frame Doorsets for Outward Opening Doors – FD30 Fire Rated
- Frames:
 - Cold-rolled from high-performance steel
 - Finish [SPECIFY] Unfinished for site painting: The frame is pre-etched and simply requires a metal primer to be applied to the frame before painting OR Powder-coated: The frame can be prefinished in a polyester powder-coated finish to a standard RAL colour
- Door Leaf:
 - Timber
 - Finish [SPECIFY] Primed: Provided pre-primed for painting on site OR Pre-finished paint: The door leafs can be provided pre-painted to a standard RAL colour OR Veneered: The door leaves can be veneered in any species of timber veneer and then lacquered in a 30% clear sheen OR Laminate: Laminate coating for a more robust finish
- Hinges:
 - [SPECIFY] Butt Hinges: Surface Mounted c/w Self Drilling Screws, Stainless Steel Finish, FD30 Fire Rated, 44mm or 54mm Doors OR ROC York Adjustable Hinge: Adjustment on 3 axes combining the ultimate finish with ease of installation and versatility, Satin Chrome Finish, FD30 Fire Rated, 44mm Doors, Doors up to 60kg - RY45, doors up to 100kg - RY80
- Skirting:
 - [SPECIFY] Surface mounted skirting OR flush skirting
- Ironmongery:
 - [SPECIFY] Lock & latch Preparation, Door Closer and Flush Bolt preparation.
- Acoustic:
 - [SPECIFY] 29db OR 32 db