

## Description

KCC Innova Concealed Frame Doorsets for Inward Opening Doors - Fire Rated FD30



## Product Summary

Innova is a concealed frame inward opening doorset, designed to create and enhance contemporary interiors

### Certification

European Norm	No Harmonised European Norm
Product Classification	n/a (No Harmonised European Norm)
EC Certificate of Conformity No.	n/a (No Harmonised European Norm)
Certifire No.	n/a
Declaration of Performance	n/a (No Harmonised European Norm)
Other Test Evidence	n/a

### BIM Assist™

### BC(A)R Assist™\*

### Guarantee

**1 Year**

Last Reviewed

29/11/2019

\* ROI Only

For the purpose of continual product development, KCC reserves the right to change specifications without notice.  
Please accept all dimensions as approximate. E&OE. © KCC Group 2025.

www.thekccgroup.com

#### Description

KCC Innova Concealed Frame Doorsets for Inward Opening Doors - Fire Rated FD30

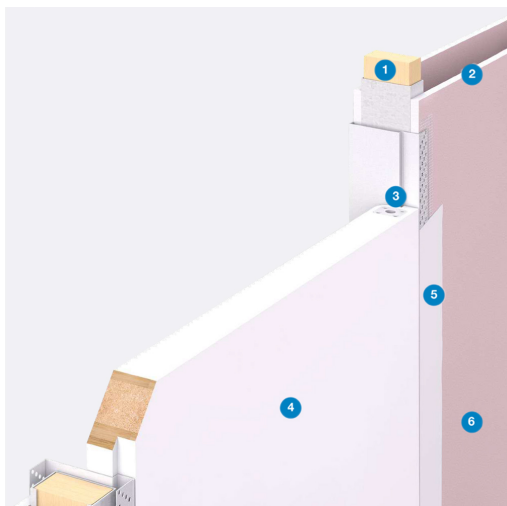


#### Features

- FD30 fire rated concealed frame doorsets for inward opening doors c/w metal frame and timber door leaf
- Complements the other KCC systems Arriva and Enigma to provide you with a range to fulfil your design criteria and aspirations whatever your situation or door configuration
- Commonly used in residential and other high-end projects where aesthetics and versatility are key
- Fully concealed frame enables you to create a sleek, contemporary finish
- Flexible wall depth
- Provided as a full doorset with the door leaf prepared to take hinges
- Manufactured to suit each project
- Concealed hinges
- Optional non fire rated version
- Acoustically rated up to 34dB
- Standard locks and latches can be used

#### Construction

- Inova is an extremely versatile doorset with an inward-opening action. When facing the concealed flush side of the door, it opens away from you
- The Innova doorset comprises a single steel profile that closes off the end of your wall. The reinforced, rolled-edge side flanges are perforated for easy fixing. The wall and jamb are then plastered or jointed over to give a continuous surface right up to the door.
- ① = Stud
- ② = Plasterboard
- ③ = Pivot Hinge
- ④ = Door Leaf
- ⑤ = Jointing Compound / Skim
- ⑥ = Painted Wall





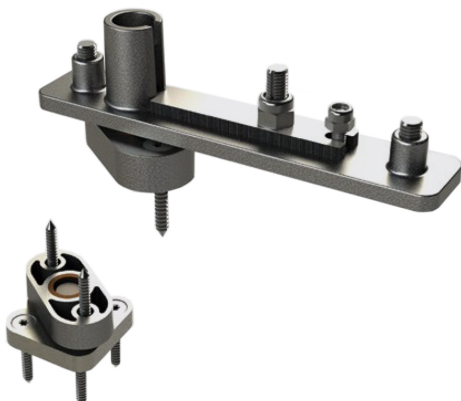
#### Door Leafs

- Innova doors are made to suit every individual order, taking into account size, quantity and finish. The doors are cut out of their original core size and then calibrated for a smooth surface to take the next stage of preparation. Doors are lipped with hardwood and veneered with an opaque kraft paper to conceal the lippings and give a completely smooth finish ready for final painting or veneered to suit your requirements
- Using our technologically advanced CNC machinery, the doors are then cut out for hinges, seals and other ironmongery where required before being palletised and sent to site in their 'ready to fit' form
- Specification
  - Particle – 29kg/sqm
  - Solid Timber – 18kg/sqm
  - Thickness - 54mm
  - Max width 1100mm
  - Max height 3000mm

#### Finishes



- The metal frame and timber door leaf can be provided in a variety of different finishes
- Frames
  - Cold-rolled from high-performance steel
  - Unfinished for site painting : The frame is pre-etched and simply requires a metal primer to be applied to the frame before painting
  - Powder-coated: The frame can be prefinished in a polyester powder-coated finish to a standard RAL colour
- Door Leaf
  - Timber
  - Primed: Provided pre-primed for painting on site
  - Pre-finished paint: The door leafs can be provided pre-painted to a standard RAL colour
  - Veneered: The door leafs can be veneered in any species of timber veneer and then lacquered in a 30% clear sheen
  - Laminate: Laminate coating for a more robust finish



#### Hinge Detail

- Manufactured from stainless steel with self-lubricating phosphor-bronze inserts fitted to the sockets, providing maintenance-free usage
- The hinge is provided pre-fitted to the head of the Innova frame and the door leaf is provided with cut-outs for the sockets. The base pin is mounted onto the floor. No floor box is required and the pin is completely concealed



#### Self Closing Options

- If there is a requirement for the door to be self-closing a floor spring is provided
- The floor spring is available with a standard cover plate or if you want to enhance the aesthetics it can be provided with a floor tray. This is infilled with the surrounding floor finish which virtually hides the floor spring



#### Skirting

- Surface-mounted skirting (left): A standard surface mounted skirting can be applied in the usual fashion. The skirting needs to finish at the edge of the frame
- Flush skirting (right): A flush skirting can also be used. This will need to be specified to ensure the frames are prepared to suit this detail



#### Ironmongery

- Optional Lock and latch preparation
  - The frame is prepared to receive the lock or latch that will be used in the door. Almost all standard lock and latch types are compatible with the frame. The strike plate is included with the doorset, the actual lock or latch is not. The lock/latch is fitted to the door on site
  - The strike plate is provided in stainless steel as standard. If another finish is required please ensure this is clearly specified
  - The strike plate is surface-mounted onto the frame
- Optional Flush bolts
  - These can be used in the normal fashion. The hole in the frame is drilled out on site. The flush bolts are fitted on site



**Acoustic Options**

- Tested by BM TRADA
- Up to 34db

**Description**

KCC Innova Concealed Frame Doorsets for Inward Opening Doors - Fire Rated FD30

**Specification Text****CONCEALED FRAME DOORSETS**

- Manufacturer: KCC Group
- Product reference: KDO-S/INNOVA/NFR
- Type: Arriva Concealed Frame Doorsets for Inward Opening Doors
- Non Fire Rated as schedule
- Door Size: [SPECIFY] - Max width 1100mm, Max height 3000mm
- Frame Material: Folded mild steel
- Door Material: FD30 fire rated article board – 29kg/sqm, solid timber – 18kg/sqm
- Door Thickness: 54mm
- Finishes [SPECIFY]
  - . Frame: Unfinished for site painting or powder-coated to a standard RAL
  - . Door: Primed for site painting or pre-finished to a standard colour or timber veneered with clear lacquer or laminate
- Hinges [SPECIFY]
  - . Pivot hinge finished in satin stainless steel or Innova pivot hinge with self-closing floor spring finished in satin stainless steel
- Locks / Latches [SPECIFY]
  - . The frame can be prepared for all standard locks and latches
  - . The latch plate and insert for the frame is provided only, not the lock or latch itself
- Door Trim [SPECIFY] - Flush handles are recommended
- Acoustic Rating: [SPECIFY] Up to 34dB
- Vision Panel: [SPECIFY SIZE] , [SPECIFY GLASS] clear or satin etched
- Fire Rating: FD30 fire rated
- Smoke Seal: [SPECIFY] if required