

Description

KCC Una Timber Riser Door System c/w Concealed Steel Frame. FD60 Fire Rated



Product Summary

Una is a concealed frame riser door system designed to semi-conceal unsightly riser and service doors. The system includes a steel frame and timber door leaves

Certification			BIM Assist™	
European Norm	No Harmonised European Norm			
Product Classification	n/a (No Harmonised European Norm)			
EC Certificate of Conformity No.	n/a (No Harmonised European Norm)		BC(A)R Assist™*	
Certifire No.		n/a	Guarantee	1 Year
Declaration of Performance	n/a (No Harmonised European Norm)		Last Reviewed	30/08/2019
Other Test Evidence		n/a	* ROI Only	

#### Description

KCC Una Timber Riser Door System c/w Concealed Steel Frame. FD60 Fire Rated



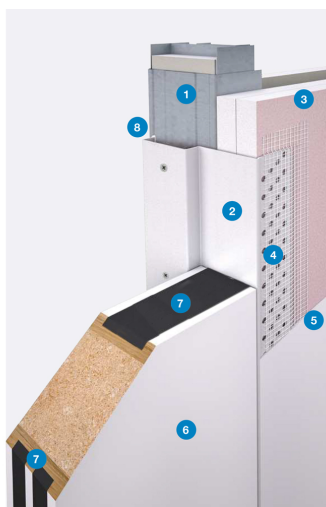
#### Features

- Una is a concealed frame riser door system designed to semi-conceal unsightly riser and service doors
- The Una riser door system utilises a timber door leaf with a concealed metal frame which allows the fitting of standard locks and handles to match in with the rest of the project
- The frame is a single-piece metal section with a perforated bead and stop for fixing holes. The frame provides a strong and robust clean edge which can be plastered up to or tape and jointed to conceal the frame. Once installed the door can be finished along with the rest of the wall to completely hide the door



#### Technical Characteristics

- Fire Rating: FD60
- Frame: Folded cold rolled mild steel. Unfinished for site painting or powder coated to standard RAL colour
- Door: Solid core timber, 54mm thickness . Textured for site painting, pre-finished to standard RAL, laminated or veneered. 29KG/sqm, maximum width 926mm, maximum height 3,000mm



#### Door & Frame Detail

- ① Wall construction
- ② Una concealed frame
- ③ Plasterboard
- ④ Fixing area
- ⑤ Jointing compound / skim
- ⑥ Timber solid core door leaf
- ⑦ Intumescent seals
- ⑧ Intumescent mastic



#### Hinge Options

- Butt Hinge: FD60 rated, satin stainless steel finish
- Surface mounted using self-drilling screws



#### Hinge Options

- TE527 3D concealed hinge: FD60 rated, chrome
- Adjustment on 3 axes
  - Horizontal +3mm -3mm
  - Depth +1mm -1mm
  - Vertical +3mm -3mm
- Doors up to 120kg
- Opening Angle 180°
- Manufactured from cast and pressed mild steel components
- Maintenance-free slide bearings



#### Testing

- Fire: Single and double door leaves. Testing by Exova to FD60. Non fire rated and FD30 options available
- Smoke: Smoke seals can be provided
- Acoustic: Single and double door leaves. Testing by Exova to 32db

**Description**

KCC Una Timber Riser Door System c/w Concealed Steel Frame. FD60 Fire Rated

**Specification Text**

- Manufacturer: KCC Group
- Product Name: KDO-S/UNA/FD60
- Product Type: Una Timber Riser Door System c/w Concealed Steel Frame
- Door Size: Custom. As per door schedule
- Frame material: Folded cold rolled mild steel
- Door material: Solid core timber
- Door thickness: 54mm
- Frame type: Concealed
- Hinges: Butt Hinge or Concealed TE527 3D FD60 [SPECIFY]
- Fire Rating: FD60
- Acoustic Rating: 32db
- Finishes: Frame - Unfinished for site painting or powder coated to standard RAL colour. Door - Textured for site painting, pre-finished to standard RAL, laminated or veneered. [SPECIFY]