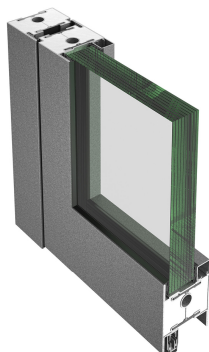


#### Description

KCC Schuco Jansen Glazed Fire Protection. Janisol C4, Fire Resistant and Smoke Proof System for Doors, Partitions & Facades



#### Technical Features

**Function & Operation** Fire Resistant and smoke proof glazed fire system for doors, partitions and facades. Schuco Jansen glazed fire protections systems are used to separate fire compartments and significantly delay the spread of smoke and fire. Thanks to their insulating properties, they counteract an increase in temperature on the side facing away from the fire, which helps to secure the escape routes in stairwells or corridors, for example

**Summary of Features** See advanced features

**Options** See advanced features

#### Dimensions

**Dimensions** See advanced features

#### Finishes

**Finishes Available** See advanced features

#### Certification

**European Norm** No Harmonised European Norm

**Product Classification** n/a (No Harmonised European Norm)

**EC Certificate of Conformity No.** n/a (No Harmonised European Norm)

**Certifire No.** n/a

**Declaration of Performance** n/a (No Harmonised European Norm)

**Other Test Evidence** n/a

#### BIM Assist™

#### BC(A)R Assist™\*

#### Guarantee

**1 Year**

Last Reviewed

08/02/2019

\* ROI Only

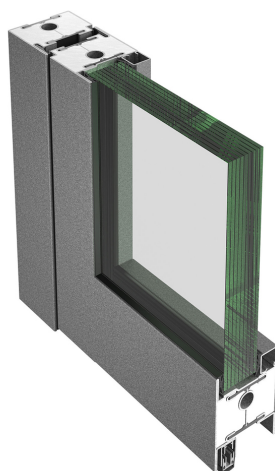
**Description**

KCC Schuco Jansen Glazed Fire Protection. Janisol C4, Fire Resistant and Smoke Proof System for Doors, Partitions & Facades

**Selection Characteristics**

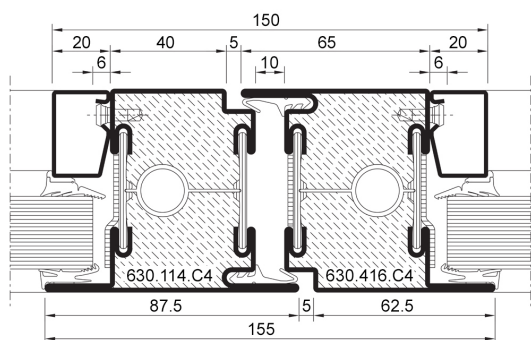
This product is suitable for the following applications:

- Latched Rebated Doors, Single & Double Leaf, Inward or Outward Opening
  - Fire Resistance 60/60, 90/90
  - Not suitable for push / pull doors
  - Double leaf doors must have one leaf secured by flush bolt
- Screens
  - Fire Resistance 60/60, 90/90

**Features**

- Fire and smoke rated doors and partitions in galvanised mild steel
- Elegant 70mm frame depth, transparent building components provided as single or double leaf doors, with side lights and / or toplights or as a partition wall all designed to prevent the spread of smoke and fire
- In the event of a fire, a low-flammability double rebate gasket guarantees a secure closure

### Janisol C4 EI60 / EI90, Satin Stainless Steel

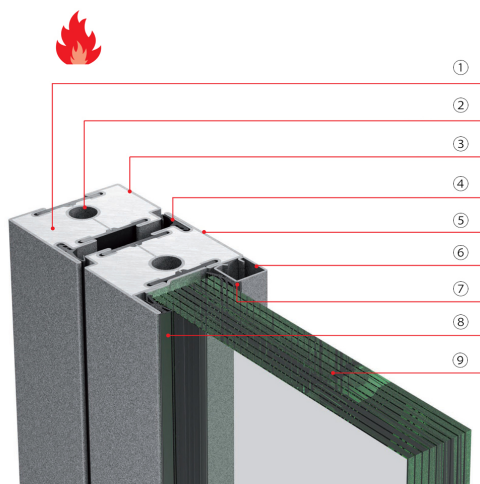


Typical Meeting Style

#### Janisol C4 EI60 & EI90 Door

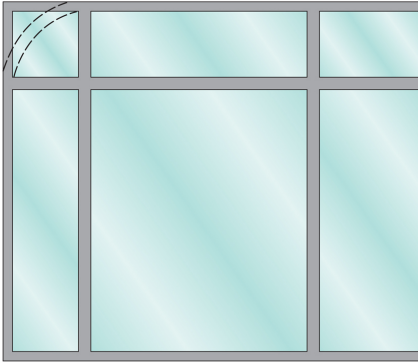
- Galvanised mild steel or stainless steel system for doors and fixed glazing
- 70mm basic depth, flush-fitted on the inside and outside
- Narrow face widths
  - Frame and leaf from 105mm
  - Meeting stile assembly 155mm / 150mm
- Single and double-leaf doors, inward and outward-opening, can be combined with toplight or fixed glazing
- Maximum permissible leaf dimensions, Single Leaf:
  - Integrity 60, Insulation 60 =W1598mm x H2906mm x Area 4.21 M2
  - Integrity 90, Insulation 90 =W1426mm x H3044mm x Area 5.21 M2
  - Integrity 90, Insulation 90 =W1656mm x H2889mm x Area 4.34 M2
- Maximum permissible leaf dimensions, Double Leaf
  - Integrity 60, Insulation 60 =W1598mm x H2889mm x Area 4.19 M2
  - Integrity 90, Insulation 90 =W1529mm x H2889mm x Area 4.01 M2
- Leaf weight up to 300 kg
- Glass infill unit thickness of 15 to 39mm, glazing installed by means of dry or wet glazing
- CE certified system in accordance with the product standard EN 14351-1\*
- Material: Pre-galvanised mild steel profiles, suitable for powder and wet paint coating or stove enamelling
- Large range of system-tested door fittings
- Easy-access thresholds

\*CE Certification is dependant upon the options selected and the configuration of the system. We can advise you further when the design is known



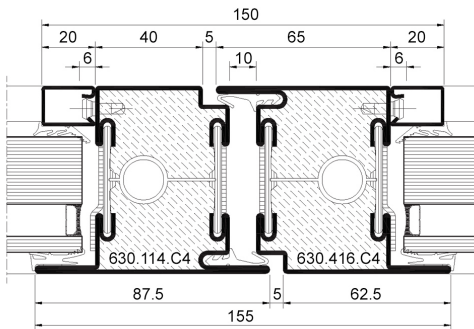
#### Door Characteristics

- ① Ceramic board
- ② Cable channel
- ③ Frame profile
- ④ Door gasket
- ⑤ Leaf profile
- ⑥ Steel glazing bead
- ⑦ Inner gasket
- ⑧ Outer gasket
- ⑨ Fire resistant glass



#### Janisol C4 EI60 & EI90 Fixed Screens / Partitions

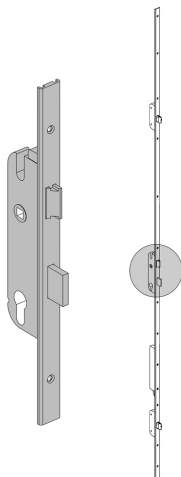
- Steel or stainless steel system for fixed screens / partitions
- Basic depth 70 mm
- Fire certification permits EI60 up to 4755mm height and EI90 up to 3963mm height. Width sizes are dictated by the glass certification
- Narrow face widths: Sash bars 70mm
- System solutions for arched and segmented openings
- Infill unit thicknesses from 15 to 39mm, glazing installed by means of wet glazing
- System tests in accordance with the product standard EN 14351-1
- Material: Pre-galvanised mild steel profiles, suitable for powder and wet paint coating or stove enamelling



Optional Meeting Style c/w Double Glazed Unit

#### Optional Meeting Styles

- Multiple variations exist. Illustrated is the meeting style c/w double glazed units



#### Multi-Point Locking

- Integrated multi-point locking, motorized or mechanical is available. Select from normal or panic function

**Description**

KCC Schuco Jansen Glazed Fire Protection. Janisol C4, Fire Resistant and Smoke Proof System for Doors, Partitions & Facades

