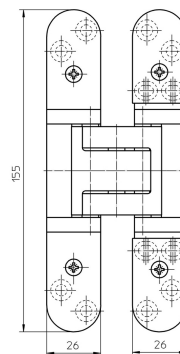
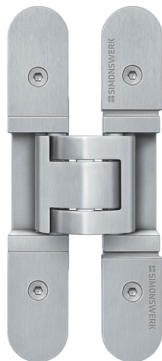


## Description

Simonswerk Tectus Fire Rated Fully Concealed Hinge for Flush Fitted Doors up to 120kg. Includes Integrated Intumescent Kit



## Technical Features

**Function & Operation** Door Hinge that provide a seamless, almost invisible appearance for flush fitting doors

**Summary of Features** See advanced features

**Options** n/a

## Dimensions

**Dimensions** L155 mm (see drawing)

## Finishes

**Finishes Available** Matt Chrome, Matt Nickel, Bronze Effect, Polished Brass, Stainless Steel Look, Polished Nickel Plate, Satin Nickel Plate

## Certification

**European Norm** No Harmonised European Norm

**Product Classification** n/a (No Harmonised European Norm)

**EC Certificate of Conformity No.** n/a (No Harmonised European Norm)

**Certifire No.** n/a (No Harmonised European Norm)

**Declaration of Performance** n/a (No Harmonised European Norm)

**Other Test Evidence** Fire Tested. EN 1634:1. Reference 178450.

## BIM Assist™

## BC(A)R Assist™\*

## Guarantee

**1 Year**

Last Reviewed

07/01/2019

\* ROI Only

**Description**

Simonswerk Tectus Fire Rated Fully Concealed Hinge for Flush Fitted Doors up to 120kg. Includes Integrated Intumescent Kit

**Features**

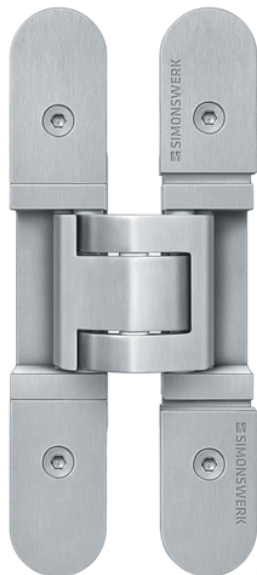
- Completely concealed hinge system for timber, steel or aluminium doors and frames
- Load capacity 120kg
- Opening Angle 180°
- 3D Adjustment
  - Horizontal adjustment +/- 3mm
  - Vertical adjustment +/- 3mm
  - Compression adjustment +/- 1mm
- Manufactured from cast and pressed mild steel components
- Maintenance-free slide bearings

**Fire Rated**

- FD60 fire rated
- 1mm Intumescent material is built into the body
- Fire rating based on 3 hinges per leaf

## Description

Simonswerk Tectus Fire Rated Fully Concealed Hinge for Flush Fitted Doors up to 120kg. Includes Integrated Intumescent Kit



## Specification Text

### CONCEALED DOOR HINGES

- Standard: To BS EN 1935.
- Hinges CE marked.
- Manufacturer: Simonswerk
- Product reference: KH-TE527 3D FR
- Type: Simonswerk Tectus Fire Rated Fully Concealed Hinge for Flush Fitted Doors up to 120kg. Includes Integrated Intumescent Kit
- Size: L155 mm
- Material/ finish: [SPECIFY FINISH]

