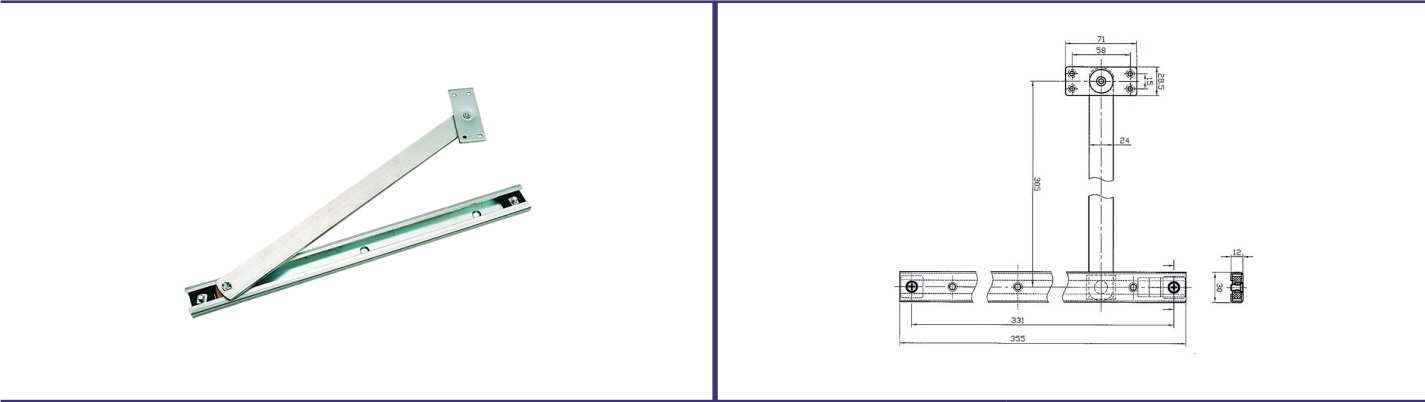


Description

KCC Mortice Limiting Stay / Door Restrictor (Previously KA-9948)



Technical Features		Dimensions	
Description	KCC Mortice Limiting Stay / Door Restrictor (Previously KA-9948)		
Material	Steel	Function & Dimensions (mm)	Limits the opening angle of a door / window to 90 degrees
Material Options	No	Finishes Available	
Concealed Clip on Rose	n/a	Bright Zinc Plated	
Equality Act	n/a		
Fixings	Wood Screws		

Certification		BIM Assist™	
European Norm	No Harmonised European Norm	BC(A)R Assist™*	
Product Classification	n/a (No Harmonised European Norm)		
EC Certificate of Conformity No.	n/a (No Harmonised European Norm)		
Certifire No.	n/a (No Harmonised European Norm)		
Declaration of Performance	n/a (No Harmonised European Norm)	Guarantee	5 Years
Other Test Evidence	Fire Assessed PAR/11563/01A	Last Reviewed	29/04/2021
		* ROI Only	

Description

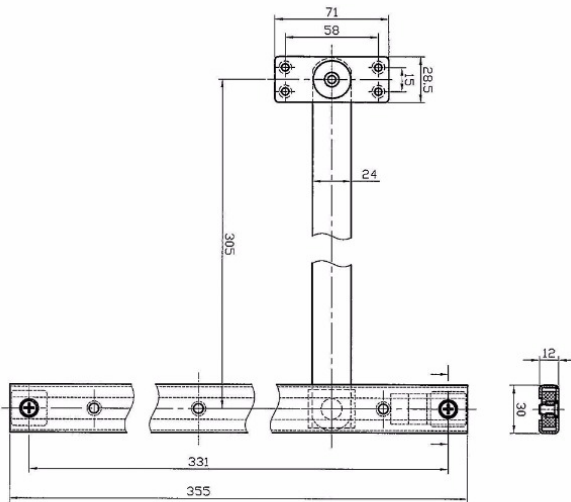
KCC Mortice Limiting Stay / Door Restrictor (Previously KA-9948)



Specification Text

750 LIMITING DOOR STAYS

- Manufacturer: KCC Group
- Product reference: KA-930000
- Type: Mortice Limiting Stay
- Size: 335mm x 30mm.
- Material/ finish: Steel / Bright Zinc Plated
- Features: Restricts to 90 degreed



*For the purpose of continual product development, KCC reserves the right to change specifications without notice.
Please accept all dimensions as approximate. E&OE. © KCC Group 2025.*

www.thekccgroup.com