

Description

Daosafe Full Height Turnstile, Single Door



Product Summary

Full height single door turnstile designed to provide entry access solutions for high security applications

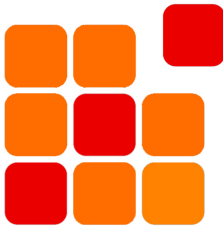
Certification		BIM Assist™	
European Norm	No Harmonised European Norm	CE	
Product Classification	n/a (No Harmonised European Norm)	BC(A)R Assist™*	
EC Certificate of Conformity No.	n/a (No Harmonised European Norm)	Guarantee	
Certifire No.	n/a	3 Years Mechanical	
Declaration of Performance	n/a (No Harmonised European Norm)	Last Reviewed	03/07/2025
Other Test Evidence	n/a	* ROI Only	

Description

Daosafe Full Height Turnstile, Single Door

**Features**

- Full height turnstile designed to provide entry access solutions for high security single door applications
- Grade 304 brushed stainless steel construction
- The mechanism is equipped with an automatic regulated hydraulic buffer device. No noise and impact when running
- Single directional or Bi-directional is selectable
- Anti-tailing function: Only one person passes at one time
- Entry direction can be controlled manually through lock
- When power is off, turnstile will open automatically
- Green and red LED indicator display passing status
- IP65 waterproof level, indoor & sheltered outdoor use
- Supports integrated with most types of access control systems

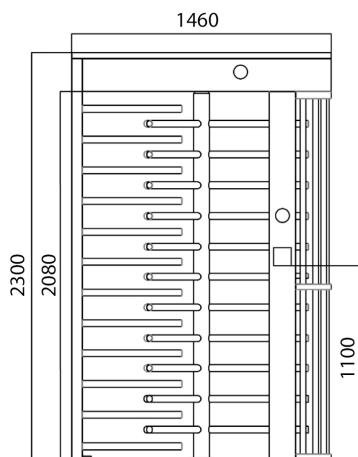
**Customisation**

- Material option of grade 316 stainless steel
- Rotor option of 90° / 120° (four / three sections)
- Appearance color can be customised based on installation environment
- Dimensions can be customized to meet your request
- Logo can be customized
- Picture: high resolution and scene picture can be customised

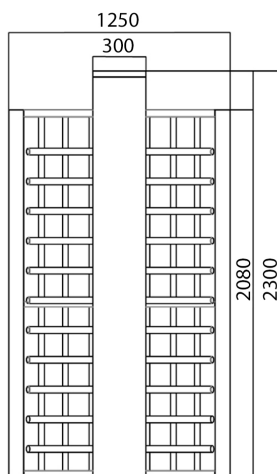
Technical Characteristics



- Framework Material: Grade 304 Full Stainless Steel (grade 316 option)
- Dimensions: 1460 x 1250 x 2300mm
- Inner Height: 2080mm
- Passage Width: 666mm
- Passing Direction: Single directional / Bi-directional
- MCBF (Mean Cycles Between Failures) : 10 million
- Power Supply: AC220V/110V, 50/60Hz
- Operation Voltage: 24V DC
- Power Consumption: 40W
- Operation Temperature: -15 °C - +60 °C
- Operation Humidity: 0 ~ 95% (No freeze)
- Weight: 200kg/pcs
- Working Environment: Indoor / sheltered outdoor
- Flow Rate: 30 people per minute
- LED indicator: Two LED indicators - green → entry, red × no entry
- Emergency: Automatic arm open when power off
- Communication: Dry contact, Relay signal, RS485
- Integration: Possible with most access control systems



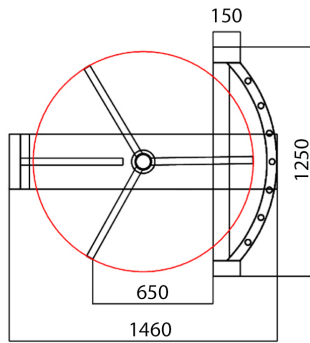
Front View



Side View

*For the purpose of continual product development, KCC reserves the right to change specifications without notice.
Please accept all dimensions as approximate. E&OE. © KCC Group 2025.*

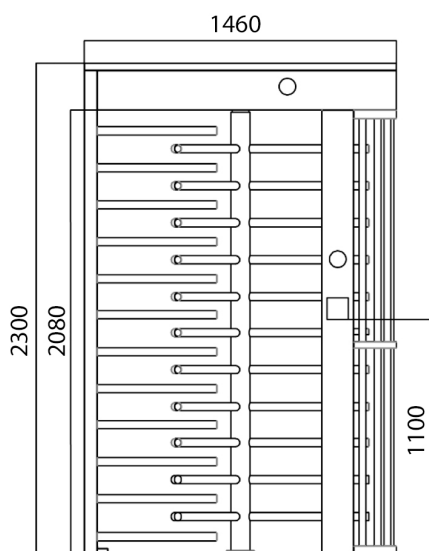
www.thekccgroup.com



Top View

Description

Daosafe Full Height Turnstile, Single Door



Specification Text

SENSOR BARRIER / TURNSTILE

- Manufacturer: KCC Group / DaoSafe
- Product reference: KAB-DS411
- Type: Daosafe Full Height Turnstile Single Door
- Framework Material: 304 Full Stainless Steel
- Dimensions: 1460 x 1250 x 2300mm
- Weight: 200kg/pcs
- Passage Width: 650mm
- Arm Support: 120° rotors with 3 sections or 90° rotors with 4 sections
- Passing Direction: Single directional / Bi-directional
- MCBF (Mean Cycles Before Failures): 10 million
- Power Supply: AC220V/110V, 50/60Hz
- Operation Voltage: 24V DC
- Power Consumption: 40W
- Operation Temperature: -15 °C - 60 °C
- Operation Humidity: 0 ~ 95% (No freeze)
- Working Environment: Indoor / Outdoor
- Flow Rate: 30 people per minute
- LED Indicator: Yes
- Emergency: Automatic arm open when power off
- Communication: Dry contact, Relay signal, RS485