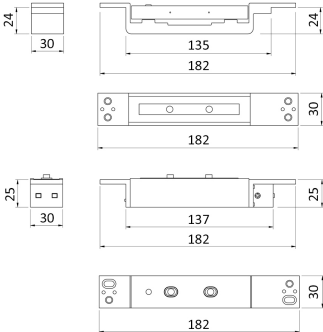
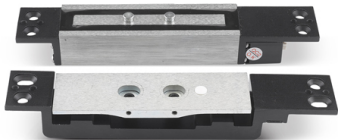


Description

KCC Mortice Electromagnetic Micro Shearlock, 2600lbs Holding Force. Fire Rated when used with Intumescent Provided



Technical Features

Function & Operation	Electromagnetic Shearlock
Summary of Features	See advanced features

Options	See advanced features
---------	-----------------------

Dimensions

Dimensions	Magnet: L182 x W30 x D25
------------	--------------------------

Finishes

Finishes Available	Black
--------------------	-------

Certification

European Norm	No Harmonised European Norm
Product Classification	n/a (No Harmonised European Norm)
EC Certificate of Conformity No.	n/a (No Harmonised European Norm)
Certifire No.	n/a (No Harmonised European Norm)
Declaration of Performance	n/a (No Harmonised European Norm)
Other Test Evidence	EN1634 Fire Assessed Report 400128

BIM Assist™

BC(A)R Assist™*

Guarantee

1 Year

Last Reviewed

18/10/2023

* ROI Only

Description

KCC Mortice Electromagnetic Micro Shearlock, 2600lbs Holding Force. Fire Rated when used with Intumescent Provided

**Features**

- Mortice Electromagnetic Micro Shearlock
- FD30 + FD60 rating when fitted with intumescent provided
- Operating voltage: 12~24Vdc
- Holding force: Up to 2,600lbs (1,200Kg) in shear
- Locking time delay: 0.5 to 25 seconds (adjustable)
- Contacts: N.C/N.O/Com

Description

KCC Mortice Electromagnetic Micro Shearlock, 2600lbs Holding Force. Fire Rated when used with Intumescent Provided



Specification Text

GENERAL ACCESS CONTROL

- Manufacturer: KCC Group
- Product reference: KEM-FR-SL500
- Type: KCC Mortice Electromagnetic Micro Shearlock, 2600lbs Holding Force. Fire Rated when used with Intumescent Provided
- Size: Magnet: L267 x W30 x D34
- Material/ finish: Black

