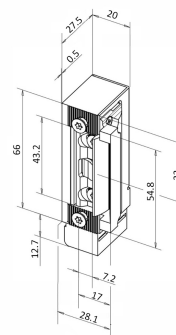


Description

Abloy Escape Door Fail Unlocked Electric Strike. 24vDC. Break-in Resistance 3000N in Accordance with EN13637



Technical Features

Function & Operation Electrical power maintains the electric strike in the locked position. Removing power unlocks the strike jaw allowing the door to be opened without operating the latchbolt of the lock

Summary of Features See advanced features

Options n/a

Dimensions

Dimensions H78.7mm x W20mm x D27.5mm

Finishes

Finishes Available Silver

Certification

European Norm No Harmonised European Norm

Product Classification n/a (No Harmonised European Norm)

EC Certificate of Conformity No. n/a (No Harmonised European Norm)

Certifire No. n/a (No Harmonised European Norm)

Declaration of Performance n/a (No Harmonised European Norm)

Other Test Evidence n/a (No Harmonised European Norm)

BIM Assist™

BC(A)R Assist™*

Guarantee

1 Year

Last Reviewed

01/09/2023

* ROI Only

For the purpose of continual product development, KCC reserves the right to change specifications without notice. Please accept all dimensions as approximate. E&OE. © KCC Group 2024.

Description

Abloy Escape Door Fail Unlocked Electric Strike. 24vDC. Break-in Resistance 3000N in Accordance with EN13637



Features

- Compact escape door strike
- Min. 2000 N, max. 3000 N holding force in accordance with EN 13637
- Unlocking under pre-load with 100% holding force
- Fail unlocked
- 24vDC
- Can only be used as a supplementary locking device on fire doors
- Adjustable FaFix® latch: 2 mm adjustment range with 0.5 mm increments
- Compatible with ProFix® 1 striking plates
- Monitoring contact integrated in the housing Monitoring flap moves together with the FaFix® screw-on attachment, i.e. the switching point always remains the same



Technical Characteristics

- Handing: Universal
- Voltage: 24 V DC
- Adjustable keeper (FF, FaFix®): Yes
- Monitoring contact (RR): Yes
- Diode (05): Yes
- Fail-unlocked: Yes
- Armature contact (AK/RR): Yes
- Input operating voltage tolerance range 24 V: ± 10%
- Nominal resistance 24V: 260 Ohm
- Switching capacity - monitoring contact :24V/1A
- Current consumption 24VDC: 90mA
- Break-in resistance: 3000N
- Latch bolt engaging depth: 6mm
- FaFix® adjustment range: 2mm
- Max. pre-load: 3000N
- Operating temperature range: -15°C to +40°C
- Continuous function load cycles: 200000
- Load cycles for in-plant test: 500000
- Installation position: Vertical and horizontal

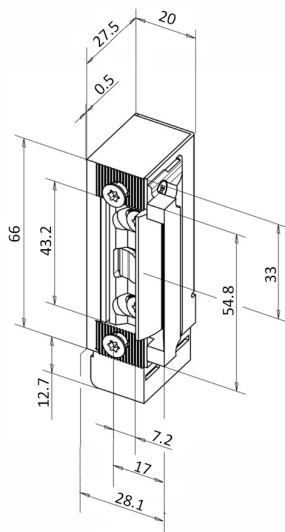
Description

Abloy Escape Door Fail Unlocked Electric Strike. 24vDC. Break-in Resistance 3000N in Accordance with EN13637

Specification Text

GENERAL ACCESS CONTROL

- Manufacturer: Abloy
- Product reference: KES-332.208F91
- Type: Escape Door Fail Unlocked Electric Strike. 24vDC. Break-in Resistance 3000N in Accordance with EN13637
- Size: H78.7mm x W20mm x D27.5mm
- Material/ finish: Silver



For the purpose of continual product development, KCC reserves the right to change specifications without notice. Please accept all dimensions as approximate. E&OE. © KCC Group 2024.

www.thekccgroup.com