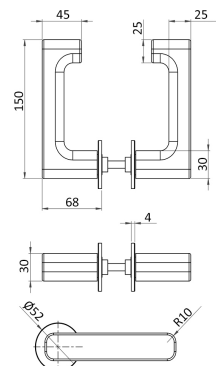
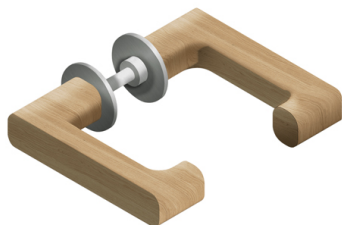


## Description

Modus™ Oak Square Section Return to Door Lever Handle Internal Steel Reinforcement on Unsprung Stainless Steel 4mm Rose.  
Suitable for Internal Use



## Technical Features

Material	Steel Reinforcement Oak Lever Handle with Stainless Steel Grade 316 Rose
Equality Act	n/a
Fixings	Woodscrews & Bolt Through Fixings
Spindle	8mm Heso
Options	n/a

## Dimensions

Length A (mm)	150.00
Projection B (mm)	43.00
Projection C (mm)	68.00
Rose / Backplate Diameter D (mm)	52.00
Rose / Backplate Thickness E (mm)	4.00
Backplate Height F (mm)	n/a
Lock Centres G (mm)	n/a

## Finishes

Finishes Available	Mid Oak c/w 5% matt lacquer. Suitable for interior use only. Other wood species available including Walnut, Sapele & Iroko
--------------------	--

## Certification

European Norm	No Harmonised European Norm
Product Classification	n/a (No Harmonised European Norm)
EC Certificate of Conformity No.	n/a (No Harmonised European Norm)
Certifire No.	n/a (No Harmonised European Norm)
Declaration of Performance	n/a (No Harmonised European Norm)
Other Test Evidence	n/a

## BIM Assist™

## BC(A)R Assist™\*

## Guarantee

**25 Years (Mechanical)**

Last Reviewed 17/08/2023

\* ROI Only

## Description

Modus™ Oak Square Section Return to Door Lever Handle Internal Steel Reinforcement on Unsprung Stainless Steel 4mm Rose.  
Suitable for Internal Use



### Anti-vibration Rose

- All Modus roses incorporate a rubber o-ring that secures the rose outer to the inner to prevent the outer vibrating free

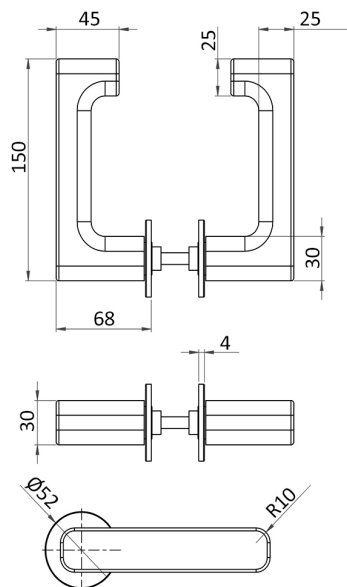
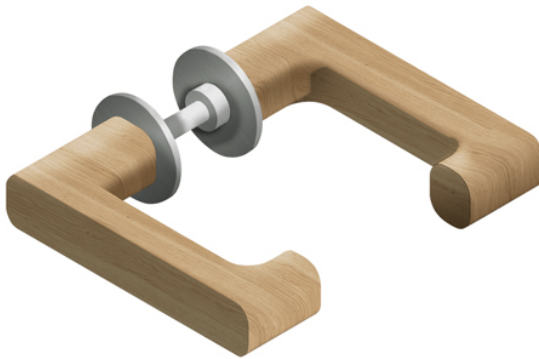


### Bespoke Design & Materials

- This is a bespoke product range, almost anything can be done
- For finishes, we can offer waxes, oils and lacquers. All in differing gloss levels, colours and If you have a shade or colour in mind, we can try and match it
- Timber - Oak is the go-to timber but almost any can be sourced and used. We have worked with Ash, Walnut, Sapele, Iroko and a few others
- Different timber will lend themselves to different style of handle based on the timber's qualities

## Description

Modus™ Oak Square Section Return to Door Lever Handle Internal Steel Reinforcement on Unsprung Stainless Steel 4mm Rose.  
Suitable for Internal Use



## Specification Text

### 610 LEVER HANDLES

- Manufacturer: KCC Group
- Product reference: Modus KF-817001
- Description: Modus™ Oak Square Section Return to Door Lever Handle Internal Steel Reinforcement on Unsprung Stainless Steel 4mm Rose. Suitable for Internal Use
- Size: See drawing
- Material/ finish: Solid Mid Oak Lever Handle with Stainless Steel Grade 316 Rose. Oak finished with 5% matt lacquer
- Mounting: Woodscrews or bolt through fixings
- Additional requirements: Unsprung Rose, 25 Year Mechanical Warranty

### 622 PERFORMANCE SPECIFICATION FOR LEVER HANDLE SETS

- Standard: To BS EN 1906
- Minimum classification grades:
  - Category of use: 4
  - Durability: 7
  - Door mass: - (no classification)
  - Fire resistance: 1
  - Safety: 1
  - Corrosion resistance: 4
  - Security: 0 -
- Type of operation: U
- Style: Round Bar Straight
- Size: 16mm
- Material/ finish: [SPECIFY FINISH] Grade 316 Stainless Steel
- Mounting: Woodscrews or bolt through fixings
- Additional requirements: Ball Bearing Unsprung Rose, 25 Year Warranty