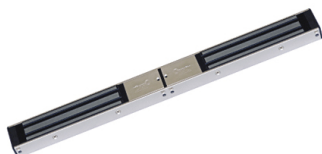


## Description

CDVI Double Surface Magnet, 300kg - 661lbs Holding Force. Monitored



## Technical Features

Function & Operation	Electromagnetic lock
Summary of Features	See advanced features

Options n/a

## Dimensions

Dimensions Magnet: L496mm x H45mm x D26mm

## Finishes

Finishes Available Aluminium

## Certification

European Norm	No Harmonised European Norm
Product Classification	n/a (No Harmonised European Norm)
EC Certificate of Conformity No.	n/a (No Harmonised European Norm)
Certifire No.	n/a (No Harmonised European Norm)
Declaration of Performance	n/a (No Harmonised European Norm)
Other Test Evidence	n/a

## BIM Assist™

## BC(A)R Assist™\*

## Guarantee

**10 Years**

Last Reviewed 18/02/2022

\* ROI Only

**Description**

CDVI Double Surface Magnet, 300kg - 661lbs Holding Force. Monitored

**Technical Characteristics**

- Holding force: 2 x 300kg (661lbs)
- Voltage: 12/24Vdc
- Current: @12Vdc = 960mA (480mA per side), @24Vdc = 480mA (240mA per side)
- IP42

**Description**

CDVI Double Surface Magnet, 300kg - 661lbs Holding Force. Monitored

**Specification Text****GENERAL ACCESS CONTROL**

- Manufacturer: CDVI
- Product reference: KEM-CDVI/SD300M
- Type: CDVI Double Surface Magnet, 300kg - 661lbs Holding Force. Monitored
- Dimensions: Magnet: L496mm x H45mm x D26mm
- Material/ finish: Aluminium