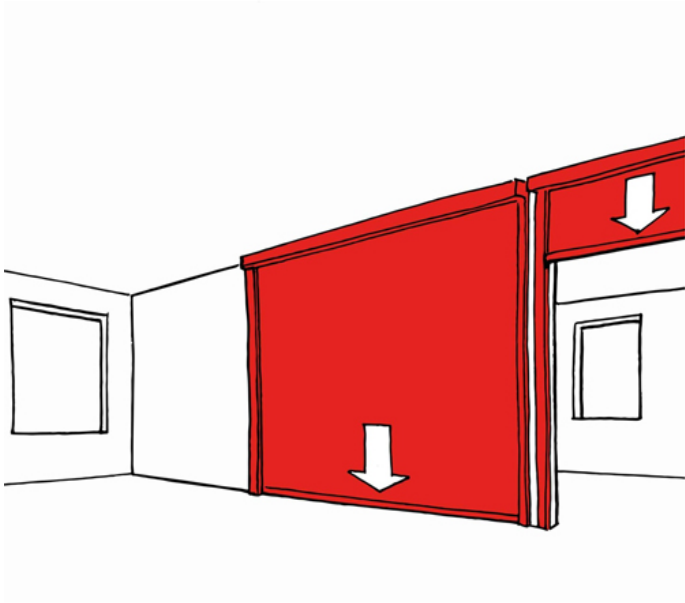


Description

Stoebich Fibershield® Fire Curtain for Vertical Protection



Product Summary

Fire curtain that when activated, provides vertical protection against fire

Certification			BIM Assist™	
European Norm	EN 12101-1		CE	
Product Classification	Conforms		BC(A)R Assist™*	
EC Certificate of Conformity No.	n/a (No Harmonised European Norm)		Guarantee	
Certifire No.	n/a		1 Year	
Declaration of Performance	n/a (No Harmonised European Norm)		Last Reviewed	24/07/2020
Other Test Evidence	n/a		* ROI Only	

#### Description

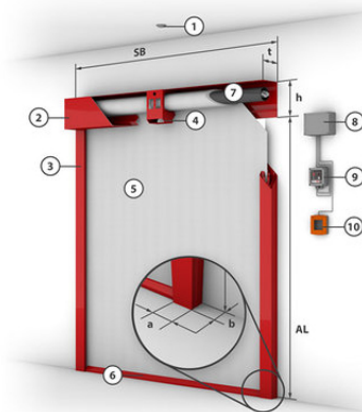
Stoebich Fibershield® Fire Curtain for Vertical Protection



#### Features & Characteristics

- Fire curtain that when activated, provides vertical protection against fire
- Standard sizes and common components delivers a highly competitive system
- Closes without external energy
- Tested to 10,000 cycles
- Closing action of top to bottom
- Fire Resistance: E30, E60, E90, EW30, EW60

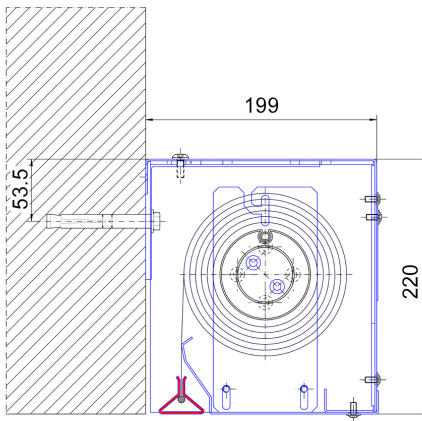
#### System Components & Dimensions



- ① Smoke detector
- ② Casing
- ③ Side guide
- ④ Fixing Bracket
- ⑤ Fabric
- ⑥ Closing element
- ⑦ Tubular motor
- ⑧ Control module
- ⑨ Control unit
- ⑩ Manual release

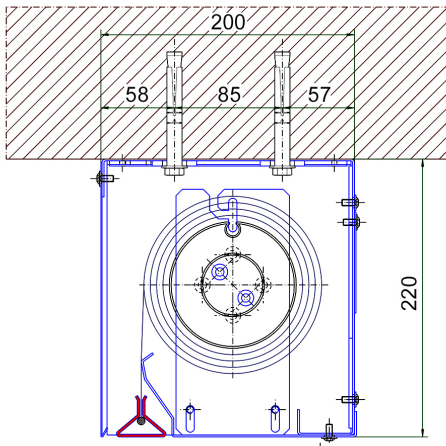
#### Dimensions

- Fabric: Ecotex 1100
  - System width (SB):  $\geq 1.1\text{m}$ ,  $\leq 3.0\text{m}$
  - Unrolled length (AL):  $\leq 3.0\text{m}$
  - Casing depth (t): 200mm
  - Casing height (h): 220mm
  - Special sizes on request up to width of 6.0m
- Fabric: Heliotex EW
  - System width (SB):  $\geq 1.1\text{m}$ ,  $\leq 3.0\text{m}$
  - Unrolled length (AL):  $\leq 3.0\text{m}$
  - Casing depth (t): 200mm
  - Casing height (h): 220mm
  - Special sizes on request up to width of 7.0m



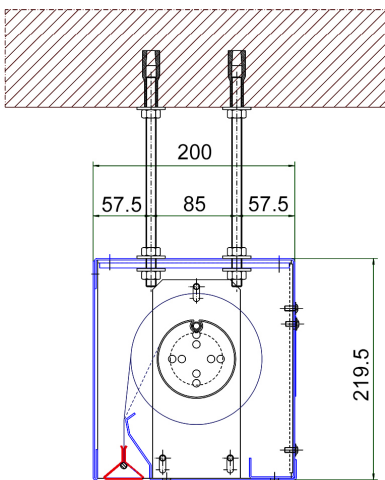
### Headbox - Installation to the Wall

- The bottom bar is shown in RED
- The drawing for illustration purposes only, Stoebich will provide final installation drawings



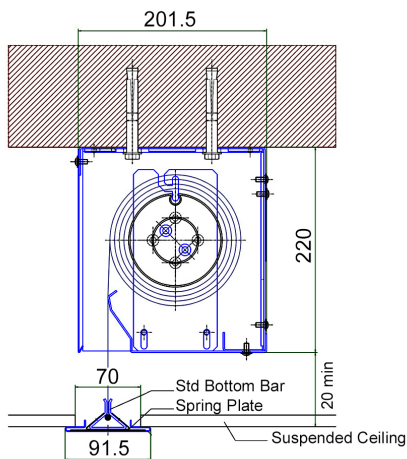
### Headbox - Installation to the Ceiling

- The bottom bar is shown in RED
- The drawing for illustration purposes only, Stoebich will provide final installation drawings



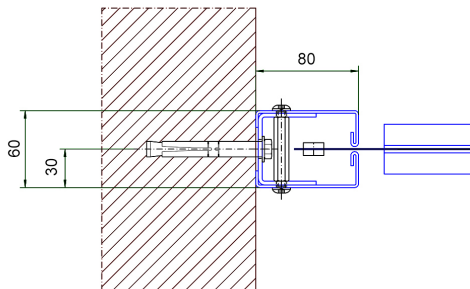
### Headbox - Alternative Installation to the Ceiling

- The bottom bar is shown in RED
- The drawing for illustration purposes only, Stoebich will provide final installation drawings



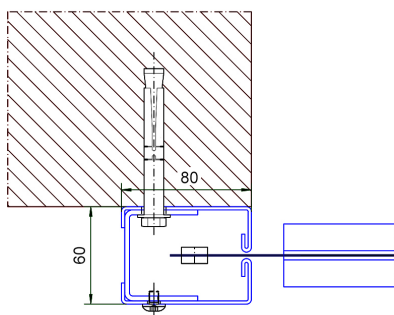
#### Headbox - Suspended Ceiling Arrangement c/w Self Levelling Bottom Bar

- The self levelling bottom bar is shown in BLUE
- The drawing for illustration purposes only, Stoebich will provide final installation drawings



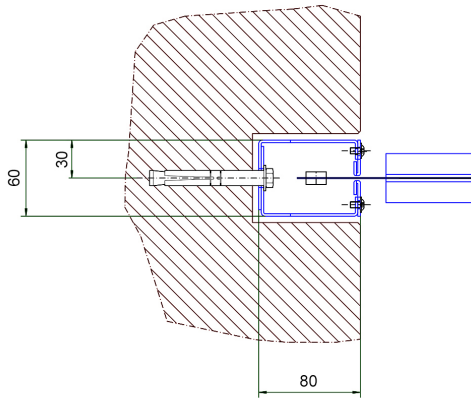
#### Side Guide - Installation in the Embrasure

- The drawing for illustration purposes only, Stoebich will provide final installation drawings



#### Side Guide - Installation to the Wall

- The drawing for illustration purposes only, Stoebich will provide final installation drawings



#### Side Guide - Installation in a Recessed Pocket

- The drawing for illustration purposes only, Stoebich will provide final installation drawings

**Description**

Stoebich Fibershield® Fire Curtain for Vertical Protection

**Specification Text****FIRE AND SMOKE CURTAIN SPECIFICATION**

- Manufacturer: Stoebich
- Product reference: KFSC-FS CURTAIN E
- Type: Stoebich Fibershield® Fire Curtain for Vertical Protection
- Fire Resistance: E30, E60, E90, EW30, EW60
- Fire load free zone:
  - Ecotex EI 30/60/90 minutes - 100/150/200 cm
  - Heliotex EI 30/60/90 minutes - 20/30/50 cm
- Fabric: Ecotex 1100
  - System width (SB):  $\geq 1.1\text{m}$ ,  $\leq 3.0\text{m}$
  - Unrolled length (AL):  $\leq 3.0\text{m}$
  - Casing depth (t): 200mm
  - Casing height (h): 220mm
  - Special sizes on request up to width of 6.0m
- Fabric: Heliotex EW
  - System width (SB):  $\geq 1.1\text{m}$ ,  $\leq 3.0\text{m}$
  - Unrolled length (AL):  $\leq 3.0\text{m}$
  - Casing depth (t): 200mm
  - Casing height (h): 220mm
  - Special sizes on request up to width of 7.0m

