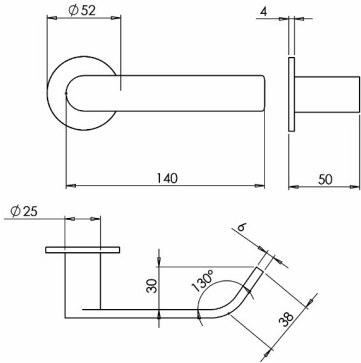


Description

Modus™ Return to Door Flat Section Unsprung Solid Stainless Steel 316 Lever Handle on Rose. PVD Finish



Technical Features

|              |                                   |
|--------------|-----------------------------------|
| Material     | Solid Stainless Steel Grade 316   |
| Equality Act | n/a                               |
| Fixings      | Woodscrews & Bolt Through Fixings |
| Spindle      | 8mm Heso                          |
| Options      | n/a                               |

Dimensions

|                                   |        |
|-----------------------------------|--------|
| Length A (mm)                     | 140.00 |
| Projection B (mm)                 | 44.00  |
| Projection C (mm)                 | 50.00  |
| Rose / Backplate Diameter D (mm)  | 52.00  |
| Rose / Backplate Thickness E (mm) | 4.00   |
| Backplate Height F (mm)           | n/a    |
| Lock Centres G (mm)               | n/a    |

Finishes

|                    |  |
|--------------------|--|
| Finishes Available | Satin Stainless Steel, Polished Stainless Steel. PVD: Brass, Dark Bronze, Mid Bronze, Copper, Rose Gold & Black. Other PVD Colours Available Upon Request. |
|--------------------|--|

Certification

|                                  |                                   |
|----------------------------------|-----------------------------------|
| European Norm                    | No Harmonised European Norm       |
| Product Classification           | n/a (No Harmonised European Norm) |
| EC Certificate of Conformity No. | n/a (No Harmonised European Norm) |
| Certifire No.                    | n/a (No Harmonised European Norm) |
| Declaration of Performance       | n/a (No Harmonised European Norm) |
| Other Test Evidence              | n/a                               |

BIM Assist™

BC(A)R Assist™\*

Guarantee

25 Years (Mechanical)

|               |            |
|---------------|------------|
| Last Reviewed | 13/06/2023 |
| * ROI Only    |            |

**Description**

Modus™ Return to Door Flat Section Unsprung Solid Stainless Steel 316 Lever Handle on Rose. PVD Finish

**Anti-vibration Roses**

- All Modus roses incorporate a rubber o-ring that secures the rose outer to the inner to prevent the outer vibrating free

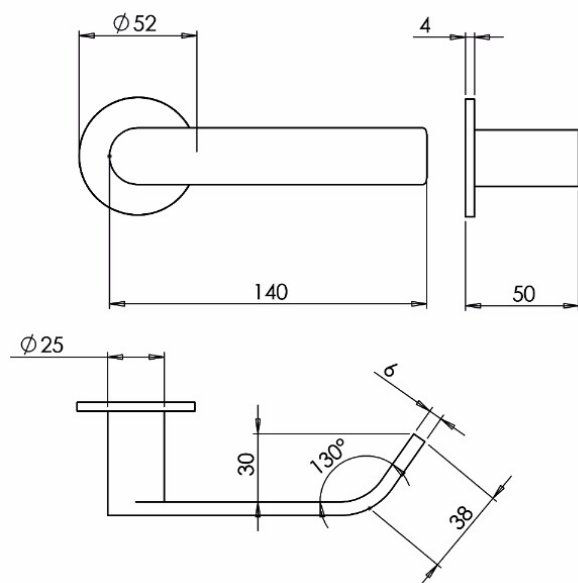
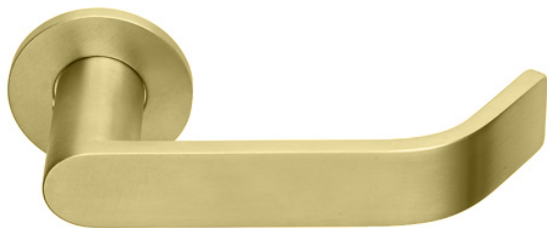
## Description

Modus™ Return to Door Flat Section Unsprung Solid Stainless Steel 316 Lever Handle on Rose. PVD Finish

## Specification Text

### 610 LEVER HANDLES

- Manufacturer: KCC Group
- Product reference: Modus KF-8108/2112
- Style: Flat Section Bar Return to Door
- Size: 25mm x 6mm
- Material/ finish: [SPECIFY FINISH] PVD, Grade 316 Stainless Steel
- Mounting: Woodscrews or bolt through fixings
- Additional requirements: Unsprung Rose, 25 Year Warranty



*For the purpose of continual product development, KCC reserves the right to change specifications without notice.  
Please accept all dimensions as approximate. E&OE. © KCC Group 2024.*

[www.thekccgroup.com](http://www.thekccgroup.com)